

next project

EXPERIENCE X-MOMENTS.

... always stay on course
with the right tool

LAUNCH			
ID	Start	End	Status
1.8	14.03.15	20.03.15	0%
Launch hardware			
1.8.1	14.03.15	20.03.15	0%
Launch software			
2	14.03.15	20.03.15	0%
Launch organisation			
1	14.03.15	20.03.15	0%
Launch approval			
1	14.03.15	20.03.15	0%

Efficient Support for Project Managers

Highlights

- > A simple project management software tool combining the most important instruments (e.g. WBS, networked Gantt chart, stakeholder analysis, etc.)
- > Flexible licensing model (starting from € 1,500 for a single user license)
- > Ready to use
- > Customisable for your specific needs



Why simplicity works?

Many project management software providers design tools with a wide range of approaches, methods and functions, but they can be complex to handle. next project, however, is designed for intuitive use and can be learned with very little effort. Experience

shows that newcomers, as well as experts, accept and adopt this tool instantly.

[Wolfgang Rabl](#)
CEO, next level holding



How did next project evolve?

next project started as a simple, free-of-charge tool, but evolved over 10 years into a single integrated solution for project management, which easily holds its own against high-level competitors. Today, next project has several work breakdown structure (WBS) layouts, a Gantt chart, the ability to consolidate

projects to a program, to import data from MS Project and to display a stakeholder analysis or a project organisation chart.

[Sylvia Gawor](#)
Developer, next level solutions



Why not use your own templates?

I have worked with many clients who have developed templates that are useful and attractively designed. In many cases, the entry of the same data information into various forms led to mistakes with serious consequences. next level solutions has managed to overcome this problem by developing

one integrated tool that only requires the entry of data once.

[Hansjörg Zahradnik](#)
Senior Consultant, next level consulting



Why next project?

Our company has been working in projects for many years. Only next project made it possible for our project managers to plan their projects independently and keep their schedules up-to-date. With very little effort, project managers create their WBS and are thus able to provide an overview of the status of the

projects. The use of this tool was and is an essential step to professional project management and implementation at ÖBB; with the support of next level solutions the tool is continuously optimised.

[Herwig Kerschbaum](#), PM Office, ÖBB Technische Services GmbH (part of the Austrian Federal Railway)



What are the future plans?

Our customers' feedback encouraged us to stick to the basic, simple concept of next project. In the current version it is possible to exchange data with our project portfolio tool – next portfolio – via a database; other systems can get easily connected as well. However the project management methods and

the usability of existing features are constantly being improved. Last but not least, the requirements of our approximately 150 customers using next project, keep giving us new ideas.

[Alexander Peschke](#)
Head of next level solutions

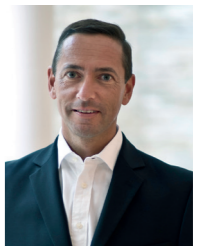
Ensuring Effective Implementation

User acceptance is as important as the functionality of the tool itself. In a standardised process next level solutions analyses strengths and weaknesses of current approaches and tools with the customer and works with them to design the most suitable solution.



We support you in selecting the right software, as well as in specifying your requirements. We point out alternatives based on experiences from other customers' solutions. At the end of the design phase, you will have comprehensive documentation of the agreed adjustments and an all-inclusive cost overview in the form of a customising list.

[Peter Minar-Hödel](#)
Senior Consultant, next level solutions



It is important to us that the architecture of our solutions is highly flexible for customer-specific configuration. Depending on your needs, you are able to configure the standard solution on your own, but we also offer customisation, if your requirements go beyond the configuration of parameters. We support the technical functions with an appealing layout to enhance user experience.

[Patrick Schirmer](#)
Developer, next level solutions



According to your requirements, we support the integration into your system environment. Depending on the situation, we also coordinate the integration of third-party systems via interfaces with next project.

[Marinko Todorovic](#)
Developer, next level solutions



After the implementation, we offer customised trainings for your staff. The training purely focuses on the tool functionality or on the interaction of processes and methods in combination with tool support. Our trainings can be provided either face-to-face on-site or online as webinars.

[Pal Dosanj](#)
Trainer, next level solutions

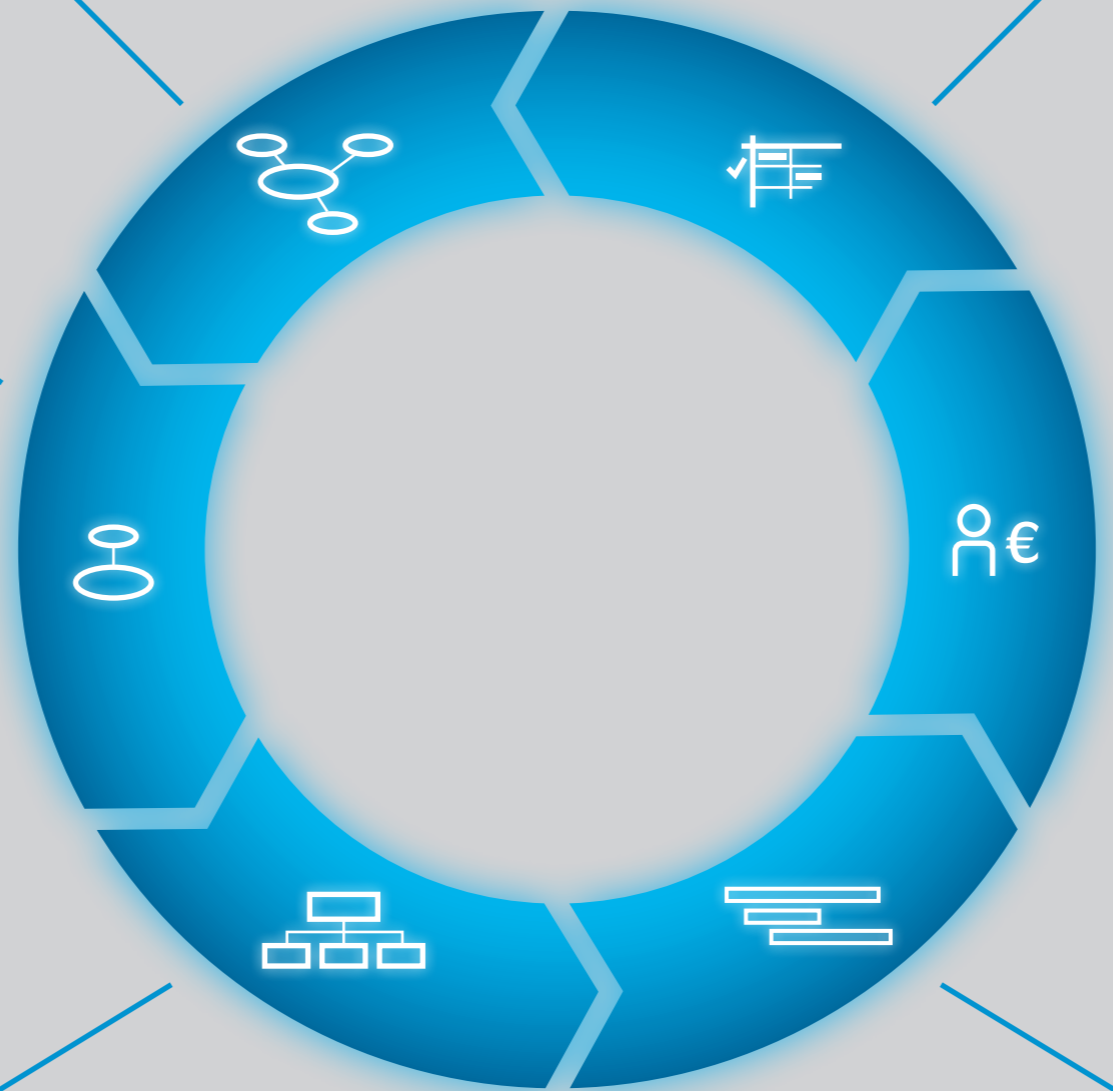


Intensive customer care is one of our key values. We are conscious that your work starts after the implementation of next project. In this respect, we offer optional, individually tailored maintenance and support contracts.

[Michael Goldschmidt](#)
Developer, next level solutions

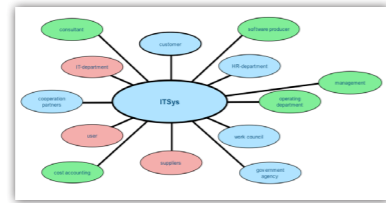


Project Management Methods



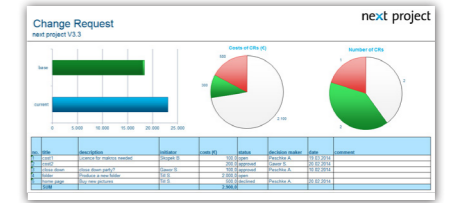
Stakeholder Analysis

- > Individuals and interest groups are represented in an environmental analysis.
- > Stakeholder relationships can be described in a table and actions can be added.



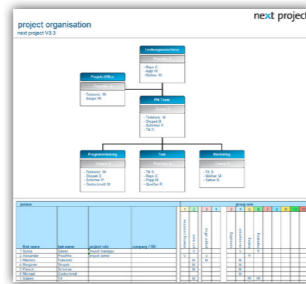
Other Methods

- > Identified project risks are managed and monitored in a risk matrix.
- > For the coordination of ongoing activities there is a to-do list including sorting and filtering functions.
- > Evaluate changes to differentiate between change requests and deviations.



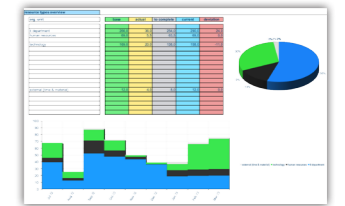
Organisation

- > Relevant roles for planning and controlling the project are defined and visualised in the project organigram.
- > Communication structures can be specified in a separate communication plan.



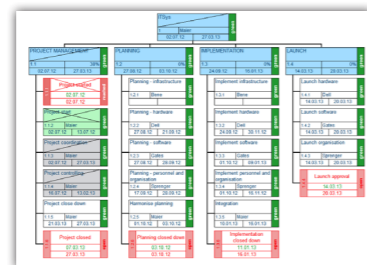
Resources/Costs

- > Based on schedule and assigned resources, efforts and costs are distributed automatically over the project's duration.
- > Resources and costs (staff and external services, etc.) can be planned on work-package level and summarised on different levels (phase/project).



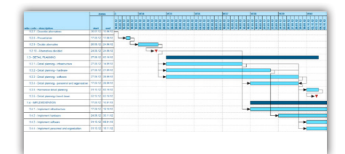
Scope

- > Project tasks are divided into phases and work packages.
- > Your project is represented in a work breakdown structure as a tree structure, detailed information about work packages can be added as a work-package-specification.



Schedule

- > Scheduling can take different forms and work with different levels of detail. Milestones are shown in the work breakdown structure and in the milestone plan.
- > The Gantt chart visualises interdependencies of work packages and their duration.



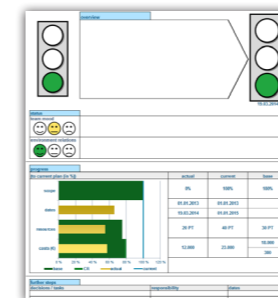
Assignment

- > Key points of the project (objectives, non-objectives, start and end dates, major tasks, budget, etc.) are defined in the project assignment.
- > During initial planning, data can be entered directly into the project assignment form. After specified planning it can be synchronised with detailed data.

START DATE: 11.07.2012	START DATE: 01.07.2012																
END DATE: 23.03.2013	END DATE: 23.03.2013																
OBJECTIVES: 1. The system meets the technical and legal requirements. 2. Users are able to use the system gradually and flexibly. 3. Cost reduction of the supported process by 100,000 € until the end of 2012.																	
NON-OBJECTIVES: 1. Complete exchange of the existing system. 2. Evaluation of alternatives to the system against the interests of suppliers and customers.																	
MAIN TASKS: PROJECT MANAGEMENT - ANALYSIS AND TECHNICAL DESIGN PLANNING, IMPLEMENTATION, TEST AND RELEASE, SUPPORT																	
RESOURCES / COSTS: <table border="1"> <tr> <th>Resource / Cost</th> <th>Cost Type</th> <th>Effort (h)</th> <th>Cost (€)</th> </tr> <tr> <td>Personnel cost</td> <td>Personnel cost</td> <td>1000</td> <td>100000</td> </tr> <tr> <td>Material cost</td> <td>Material cost</td> <td>100</td> <td>10000</td> </tr> <tr> <td>Other costs</td> <td>Other costs</td> <td>100</td> <td>10000</td> </tr> </table>		Resource / Cost	Cost Type	Effort (h)	Cost (€)	Personnel cost	Personnel cost	1000	100000	Material cost	Material cost	100	10000	Other costs	Other costs	100	10000
Resource / Cost	Cost Type	Effort (h)	Cost (€)														
Personnel cost	Personnel cost	1000	100000														
Material cost	Material cost	100	10000														
Other costs	Other costs	100	10000														

Status Report

- > Key data for progress (performance, schedule, resources and costs), including variance are presented in graphical form.
- > Project progress, measures and necessary decisions are clearly listed.
- > After finalising the status report the data is baselined and can no longer be edited.



Final report

- > Evaluation of how well the project objectives were met.
- > Reflections on different areas of the project (management, scope, dates, costs, lessons learned, ...)
- > Transfer tasks of the WBS to the post-project phase.

Actual performance: - Alternative 1: If solution was decided, the project is just in the detailed planning phase. Performance progress is evaluated possibly compared with schedules and efforts / costs, the team assumes that the budget and delivery.	
Definition objectives: 1. The system meets the technical and legal requirements. 2. Users are able to use the system gradually and flexibly. 3. Cost reduction of the supported process by 100,000 € until the end of 2012.	Definition non-objectives: 1. Complete exchange of the existing system. 2. Evaluation of alternatives to the system against the interests of suppliers and customers.
Definition management: Performance progress is evaluated possibly compared with schedules and efforts / costs, the team assumes that the budget and delivery.	Definition acceptance: The cost goal of the planning of the new system was achieved in the PC, during the next days there should be a backlog if Alternative 1: If solution was decided, the project is just in the detailed planning phase. Performance progress is evaluated possibly compared with schedules and efforts / costs, the team assumes that the budget and delivery.

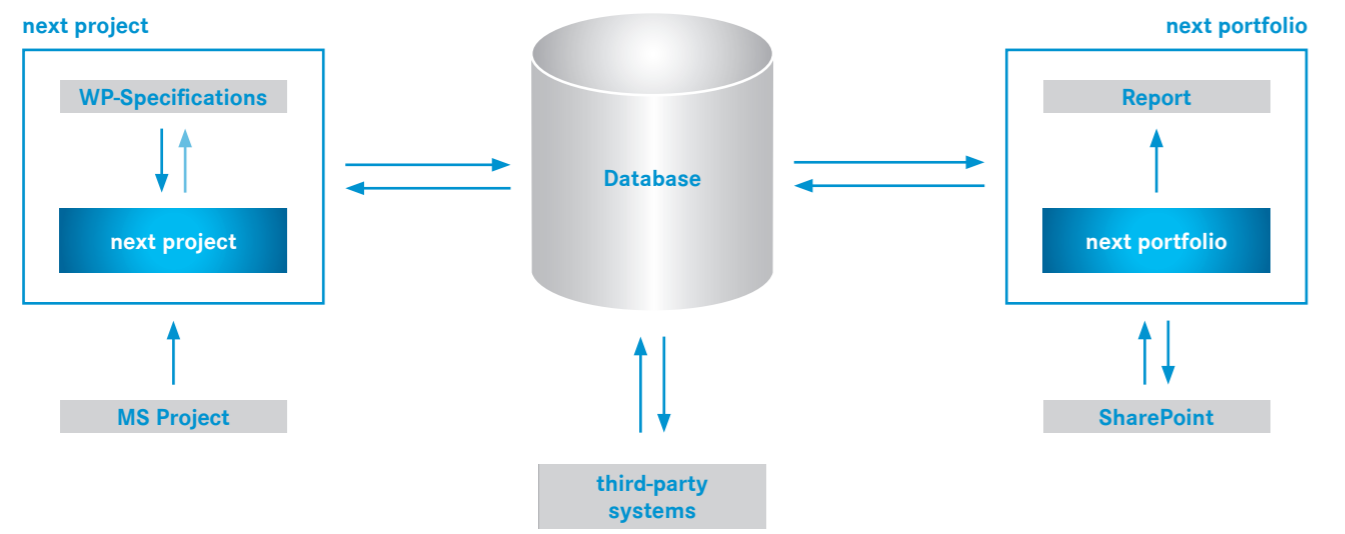
More Details

Features

- > Simple architecture, each project is saved in one single file, all tools are combined in one single project handbook, no redundant data entry
- > Several easy ways to migrate your data from one project handbook to another
- > Highlights all editable fields
- > A password-protected admin mode allows you to set up the planning structures and define mandatory project management methods depending on the complexity of your project

Interfaces

- > Exporting and importing data allows you to work on various work packages at the same time
- > One-time data migration or continuous schedule update from MS Project
- > Consolidate multiple project handbooks into one handbook
- > Exchange data with an SQL or Access database to interact with next portfolio, or third-party systems



next level solutions

A company of next level consulting

next level solutions is a top provider of IT-technical solutions for your requirements in project management and process management. We combine professional and technical expertise to provide software tools that enable you to ensure greater alignment, transparency and visibility.

Our principle is to design user-friendly software with state-of-the-art technology that is highly powerful and easy to handle. Our project management tools are compliant with internationally established standards, such as PMI® and IPMA®.

Your benefits

We are a highly reliable partner and offer a range of integrated services. Over 200 SMEs and global companies of various industries plan and coordinate their projects and processes with our tools, which helps us to improve constantly. Our aim is to identify the best possible solution for your needs that is simple and intuitive to use. Our tools are team-oriented, ergonomic and can also be tailored to specific requirements.



More about us

To get an impression of next project go to <http://www.nextlevelconsulting.eu/en/npj> and download next project light, the freeware version of next project with limited functionality!

next level solutions

Floridsdorfer Hauptstrasse 1
1210 Vienna | Austria
office@nextlevel-solutions.eu

next level consulting – get connected

Vienna

Floridsdorfer Hauptstrasse 1
1210 Vienna | Austria
T +43 1 478 06 60-0
F +43 1 478 06 60-60
office@nextlevelconsulting.eu

Bonn

Ermekeilstrasse 46
53113 Bonn | Germany
T +49 228 289 26-0
F +49 228 289 26-9
office-bonn@nextlevelconsulting.eu

Munich

Nymphenburgerstrasse 4
80335 Munich | Germany
T +49 89 360 551 66
F +49 89 360 048 30
office-muenchen@nextlevelconsulting.eu

Zurich

Alte Steinhauserstrasse 19
6330 Cham | Switzerland
T +41 41 740 04 55
F +41 41 740 09 49
office-schweiz@nextlevelconsulting.eu

Bratislava

K Iomu 1
811 04 Bratislava | Slovakia
T +421 2 4464 7111
office-bratislava@nextlevelconsulting.eu

Cape Town

25 Van Ryn Road | 7806 Constantia
Cape Town | South Africa
T +27 21 823 5123
office-capetown@nextlevelconsulting.eu

Austin

8300 Mopac Expressway #300
Austin, Texas 78759
United States of America
T +1 512 986 1913
office-austin@nextlevelconsulting.eu

www.nextlevelconsulting.eu